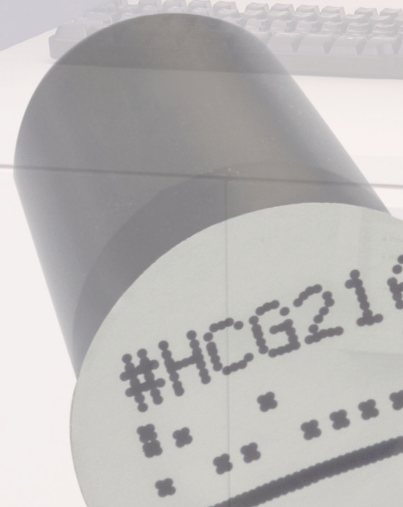
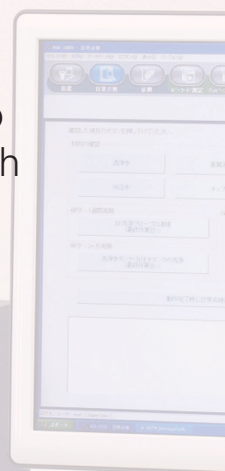




WE WANT TO BE PARENTS...

The meaning of family planning over the past 40 years has been the freedom not to conceive. While this is still true through access to better contraception and birth control, true family planning today also means knowing when one can have a baby.



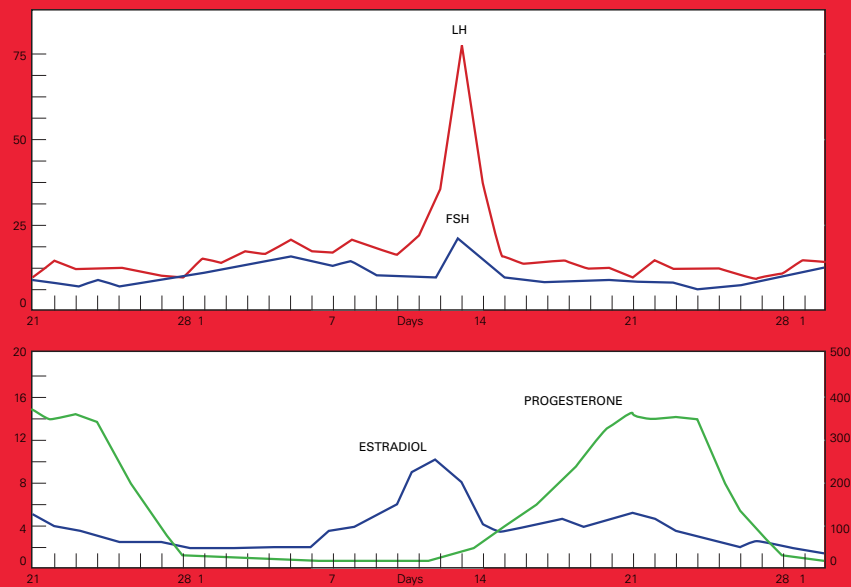
TOSOH BIOSCIENCE

WE WANT TO BE PARENTS...

The failure rate in fertility clinics goes up dramatically as a woman ages. In the western world, cumulative conception and live birth rates after six treatment cycles are about 86% and 65%, respectively, in women of less than 35 years of age, compared with 48% and 23% in women of more than 40 years¹.

In 2010, 1.9% of child-seeking women aged 20–44 years were unable to have a first live birth and 10.5% of child-seeking women with a prior live birth were unable to have an additional live birth².

Tough decisions have to be made: Stop treatment? Try another cycle? Think about adoption?



This means that accurate testing of hormone levels is a key requirement in assisting infertile couples to conceive a child.

The Tosoh AIA solution suits your needs for male and female fertility blood testing including 10 fully automated hormone tests for the quantitative measurement of Luteinising Hormone (LH), Follicle-Stimulating Hormone (FSH), Estradiol (E2), Prolactin, Progesterone, Testosterone, Human Chorionic Gonadotropin (hCG), Sex Hormone Binding Globuline (SHBG), and Dehydroepiandrosterone Sulfate (DHEA-S).

Tests run on the Tosoh Automated Immunoassay Analyser instrument series. (AIA-2000, AIA-900, AIA-360) offering solutions for fertility (In Vitro Fertilisation) centres to perform on-site testing.

Performant:

- Highly sensitive tests
- High quality (low result variability)
- Results after less than 20 minutes

Convenient:

- Easy to operate
- Always ready
- Minimal waste

Economical:

- 1 cup = 1 test (all specific reagents inside an AIA-PACK cup)
- Long calibration stability (90 days)
- Predictable reagent consumption



AIA-PACK HCG

Available tests

Test name		LH	FSH	E2	E2 (high sensitive)	Progesterone
Sample volume		40 µl	50 µl	75 µl	75 µl	30 µl
Sample type		Heparine plasma, serum	Heparine plasma, serum	Heparine plasma, serum	Heparine plasma, serum	Heparine plasma, serum
Sensitivity	Conventional	0.2 mIU/ml	1.0 mIU/ml	20.0 pg/ml	7 pg/ml	0.1 ng/ml
	SI	0.2 IU/l	1.0 IU/l	73.4 pmol/l	25.7 pmol/l	0.32 nmol/l
Test range high	Conventional	200 mIU/ml	200 mIU/ml	3,000 pg/ml	1,000 pg/ml	40 ng/ml
	SI	200 IU/l	200 IU/l	11,010 pmol/l	3,670 pmol/l	127 nmol/l

Test name		Prolactin	hCG	Testosterone	SHBG	DHEA-S
Sample volume		30 µl	10 µl	85 µl	15 µl	10 µl
Sample type		Heparine plasma, serum	Heparine plasma, serum, urine	Heparine plasma, serum	Heparine plasma, serum	Heparine and EDTA plasma, serum
Sensitivity	Conventional	1.0 ng/ml	0.5 mIU/ml (serum)	7 ng/dl	0.0475 µg/dl (0.95 µg/dl undiluted)	2 µg/dl
			2.5 mIU/ml (urine)			
	SI	27 mIU/l	0.5 IU/l (serum)	0.2427 nmol/l	0.005 nmol/l (0.1 nmol/l undiluted)	0.0543 µmol/l
			2.5 IU/l (urine)			
Test range high	Conventional	200 ng/ml	2,000 mIU/ml (serum)	2,000 ng/dl	118.75 µg/dl (2,375 µg/dl undiluted)	1,000 µg/dl
			10,000 mIU/ml (urine)			
	SI	5,400 mIU/l	2,000 IU/l (serum)	69.34 nmol/l	12.5 nmol/l (250 nmol/l undiluted)	27.14 µmol/l
			10,000 IU/l (urine)			

Besides fertility hormones a large panel of other tests are available (e.g. TSH, TPO Ab,...). Ask your Tosoh representative.

¹ Malizia BA1, Hacker MR, Penzias AS.: Cumulative live-birth rates after in vitro fertilization. N Engl J Med. 2009 360(3):236-43.
² Mascarenhas MN1, Flaxman SR, Boerma T, Vanderpoel S, Stevens: GA National, regional, and global trends in infertility prevalence since 1990: a systematic analysis of 277 health surveys. PLoS Med. 2012;9(12):e1001356. doi: 10.1371/journal.pmed.1001356. Epub 2012 Dec 18.





EC REP **TOSOH EUROPE NV**

Transportstraat 4 - 3980 Tessenderlo - BELGIUM
Tel: +32 (0)13 66 88 30 - Fax: +32 (0)13 66 47 49

TOSOH BIOSCIENCE LTD

100 Longwater Avenue, Green Park,
Reading RG2 6GP - UNITED KINGDOM
Tel: +44 (0) 1527 592901 - Fax: +44 (0) 1527 592902

TOSOH EUROPE INTERNATIONAL (DMCC BRANCH)

Unit N°: 1605, Jumeirah Bay Tower X3
Plot N°: JLT-PH2-X3A
Jumeirah Lakes Towers, Dubai
United Arab Emirates (UAE)



TOSOH CORPORATION BIOSCIENCE DIVISION

Shiba-Koen First Bldg. 3-8-2, Shiba, Minato-ku,
Tokyo 105-8623 - JAPAN
Tel: +81-3-5427-5181 - Fax: +81-3-5427-5220
www.tosoh.com



www.tosohbioscience.eu